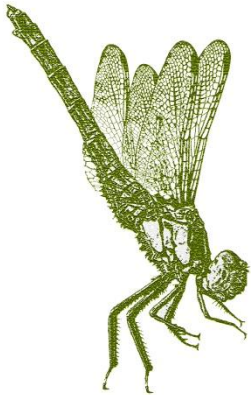


The Friends of Langlands Moss LNR, East Kilbride



Aerial View of Langlands Moss Local Nature Reserve. East Kilbride



Who are the Friends of Langlands Moss LNR?

- We are local people who live in the East Kilbride area.
- In 2006, we formed a fully constituted group because we were concerned about the decline of the area and the impact of ever encroaching industrial development on the Moss.
- At that time we did not understand the importance of the Moss.
- Since then we have worked with SLC CAG to protect and improve the hydrology of Langlands Moss LNR.

What have we done to improve Langlands Moss LNR?

- As the bog was drying out, our first priority was to improve its hydrology.
- We applied to the Big Lottery Fund and Scottish Natural Heritage for funds to buy damming material.



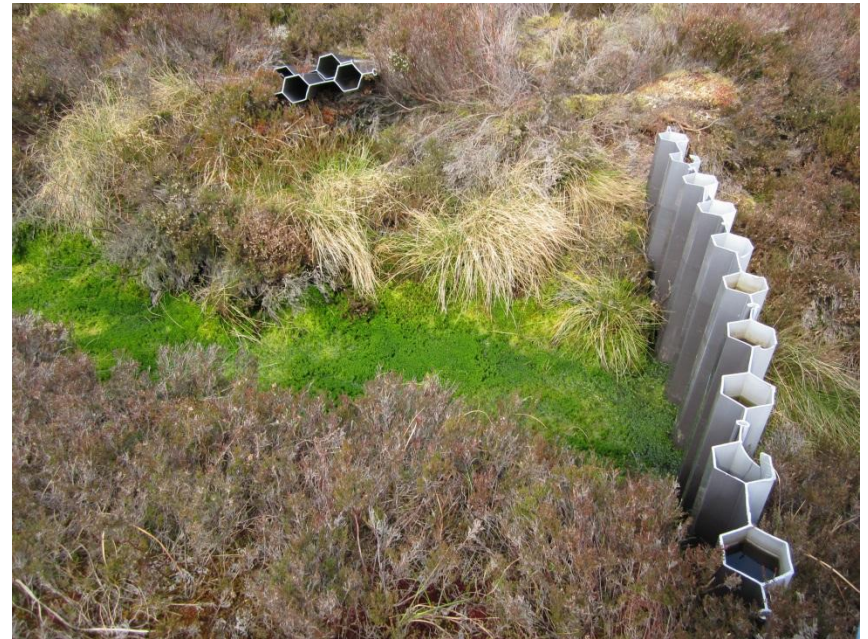
Installing Dams



- **Over 30 dams have been installed over the past five years.**
- **All installations have been done by FOLM or other voluntary groups under the supervision of FOLM and assisted by SLC CAG..**

Has it made a Difference?

- Since the dams have been installed there has been a marked improvement in the hydrology or water table of the Moss.
- **We finished the main ditch last Autumn and will start the smaller ditches later this year.**



Damming Restrictions!

- **Our damming material is made by a company called Ape and has a long shelf life. However we have found that it splinters easily in cold which means we cannot dam in the winter.**
- **As we have ground nesting birds we prefer not to install dams in the Spring.**
- **We also need several strong people, men and women to carry out the damming so it depends on people availability.**

The access paths to the Moss were all very muddy and over grown.



- **Attracting and keeping volunteers was made difficult because the access paths were in such poor condition.**

Paths improvement



- **Funds were obtained from South Lanarkshire Rural Trust Leader Programme. The improvement work on the access paths was done by Offenders supervised by the South Lanarkshire Community Payback Services Scheme.**

Boardwalk

- The very fierce winters of the last few years along with more visitors coming to the Moss either in groups or individually made us realise that we needed to replace the current boardwalk which was deteriorating into a dangerous condition.



New Boardwalk

- The new boardwalk cost just under £100K.
- Funding was obtained from SLC Renewable Energy Programme, Viridor Landfills and Heritage Lottery Fund.
- It was installed between November 2012 and January 2013.



Boardwalk Opening

- The boardwalk was officially opened by our patron and local boy, Professor Iain Stewart MBE – the TV geologist on 19th March 2013 in a blizzard.
- Despite the weather we had a very good afternoon.



Why have a Friends Group?

- **Friends Group can access funds which are not available to local authorities.**
- **It is a way of like minded people working together for a common goal.**
- **It improves local neighbourhoods and encourages pride and ownership in your own area.**
- **It can appeal to all ages.**
- **It encourages people to exercise in a healthy environment.**

Membership

- **Our age group is from 17 to 70 plus.**
- **We have people with different expertise in the group:-** administration, damming, knowledge of wildflower propagation, amphibians, butterflies and birds.
- **This enables us to have the area surveyed regularly and is improving the biodiversity records for our area.**
- **It also means the group is able to learn from each other and each member feels valued for their contribution. Praise is very important!**

Restrictions of Friends Group

- **Commitment**
- **Availability**
- **Retaining young people and sometimes not so young people!**
- **Involving everyone productively**
- **Relationships e.g. personality clashes**

Other initiatives at Langlands Moss LNR

- We have planted an area close to the Moss with a mixture of wildflower plug plants and bulbs.
- We have installed bird boxes, bat boxes and bug hotels in the wooded area around the Moss.
- We have installed refugia for amphibians on the Moss.
- There is a rare lichen habitat on the Moss.
- Community Service Payback have installed several picnic areas in the former car park.

Our funders and partners are:-

