

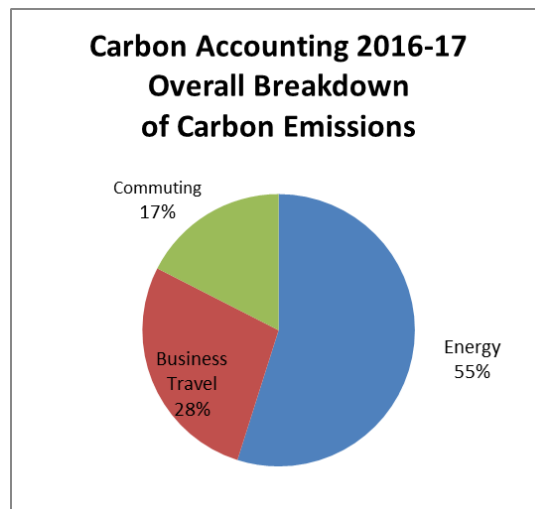
Scottish Environment LINK

Carbon Management Report 2016-7

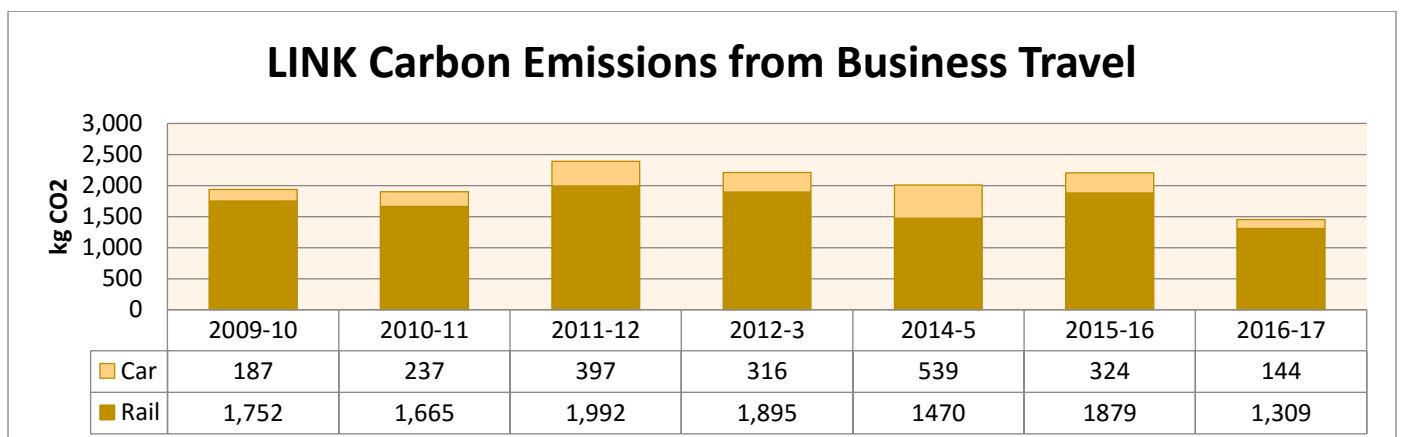
Management summary

This is the eighth published Carbon Accounts report from LINK. (The information for 2013/4 had not been gathered and this year is missing from chart data).

The scope of this year's report is the same as previously: Energy emissions for both offices (Perth and Edinburgh); Travel (both Business and Commuting) for all employees, core, Marine and Flourishing Scotland project staff; and waste and recycling from Perth office.



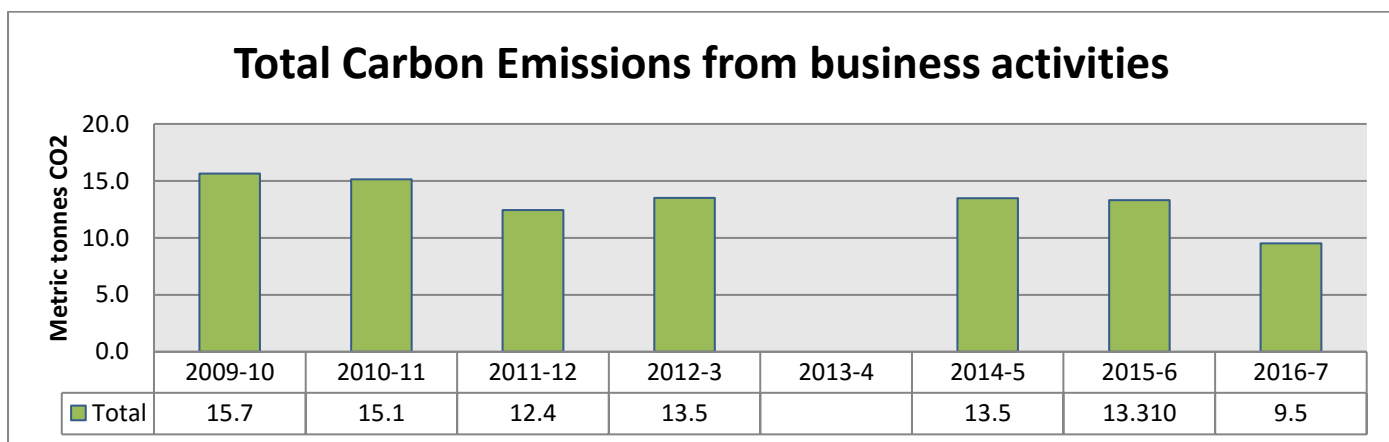
Compared to 2015-16, carbon emissions have shown a significant decrease of around 29% this year: The two areas where savings have been most notable is **energy** use, with the LINK's Edinburgh office now having all its energy provided by a 100% renewable electricity supply and a reduction in **business travel** (down 34% compared with the previous year). In addition, the travel that was undertaken is increasingly via rail (with a general reduction in car travel).



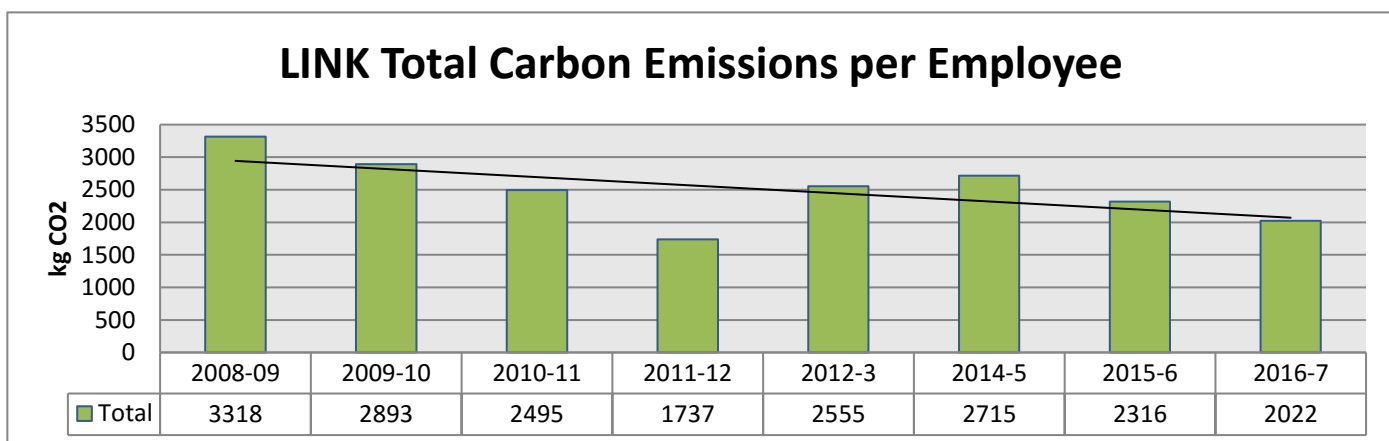
Commuting remains steady as does the amount of waste we disposed to landfill, recycled waste is significantly higher this year – up 60% however this can mostly be attributed to a general clear out of old papers in the Perth office.

LINK's environmental policy is based on the principle of the "3 Rs" - reducing consumption of energy and other resources, re-using resources as much as possible and recycling where possible.

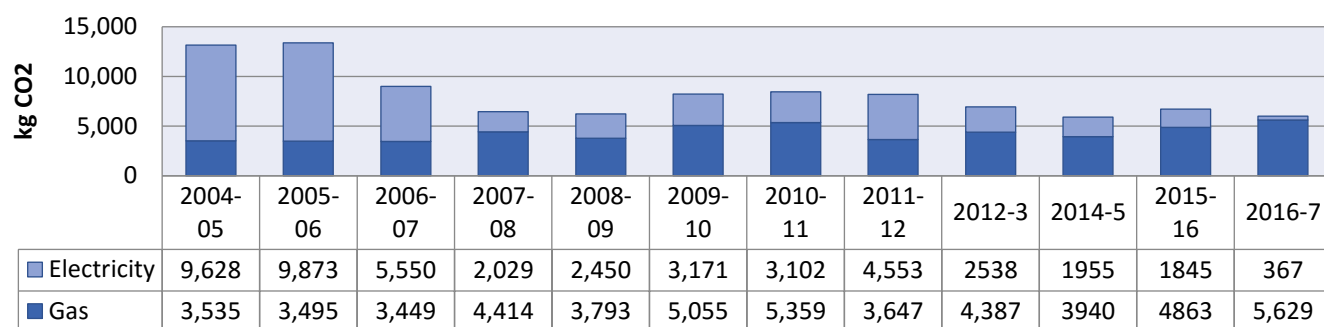
Overall our total Carbon Emissions for the year equated to 10.92 metric tonnes (a reduction of 4.5 tonnes on 2015/6). This figure includes 1.42 metric tonnes generated from travel by members – a decrease of 0.75 tonnes on the previous year, which reflects the general reduction in travel achieved across LINK. Excluding members' travel, LINK's business activities emitted 9.5 metric tonnes which was down 28% on 2015-6 levels.



In 2016-7 our average carbon emissions per (fte) employee (including emissions due to commuting to work) fell by over 12.5% (or 0.3 metric ton). This can be attributed to the general overall decrease achieved this year.



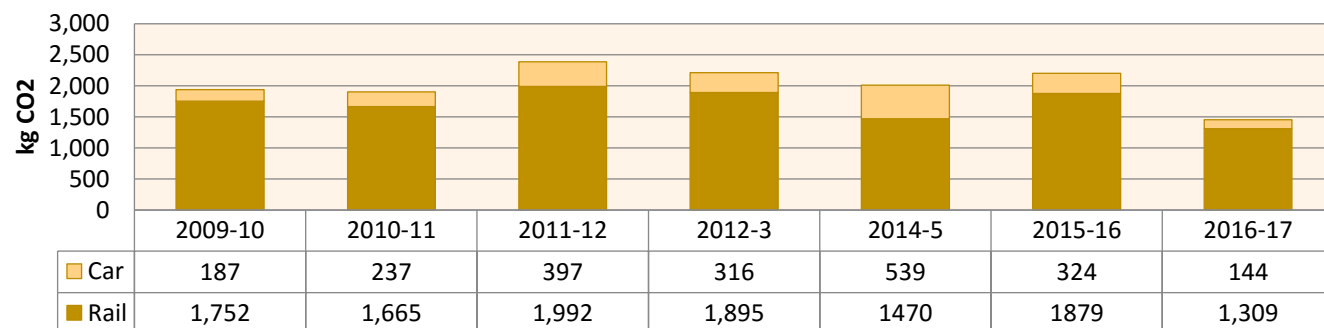
LINK Carbon Emissions from Heating & Power



Overall the carbon emissions for Heating and Power have reduced from the previous year, this is predominantly due to a change in supplier following a move to new premises in Edinburgh office, where we are now able to use a 100% renewable supplier for all our energy needs. The Perth office continues to have its electricity supply from a 100% renewable supplier, however heating continues to be provided by gas from a mixed supply.

LINK carbon emissions from business travel showed a decrease from the previous year both in car and rail travel.

LINK Carbon Emissions from Business Travel



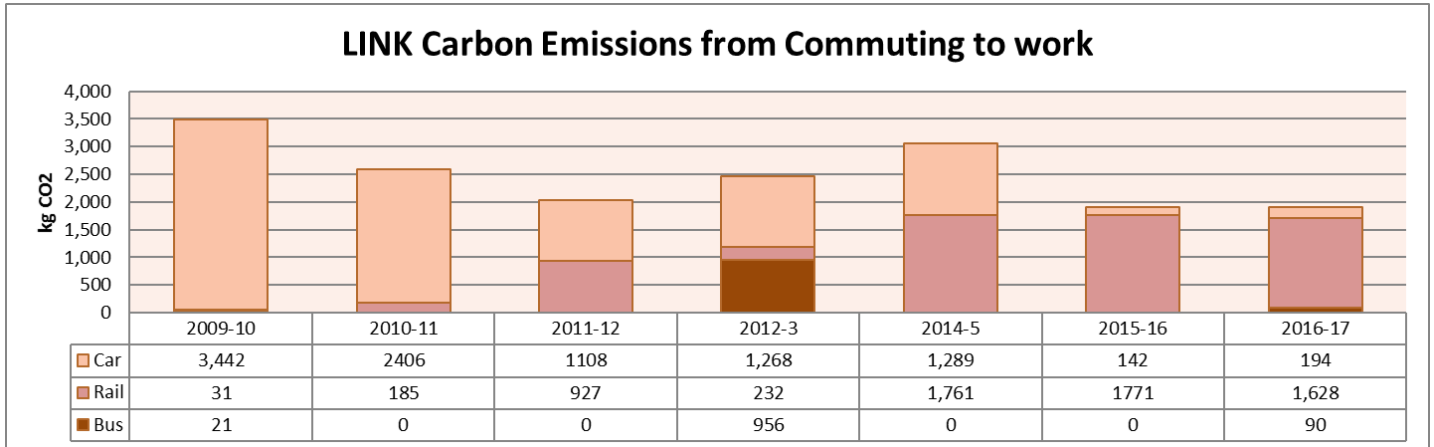
And we can see on the following page the split of business travel between the different projects/offices below. Whilst overall a reduction we can see an increase in travel from the Perth office, reflecting the move to have more meetings and events in Edinburgh.

LINK Business Travel trends 2008-17

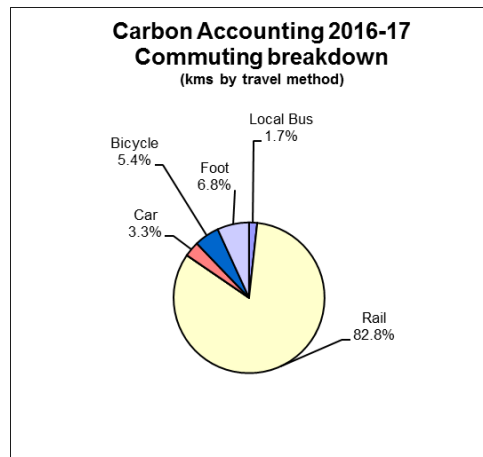


Overall carbon emissions from staff commutes to work was similar to 2015-16, with public transport continuing to be the dominant mode of transport.

LINK Carbon Emissions from Commuting to work

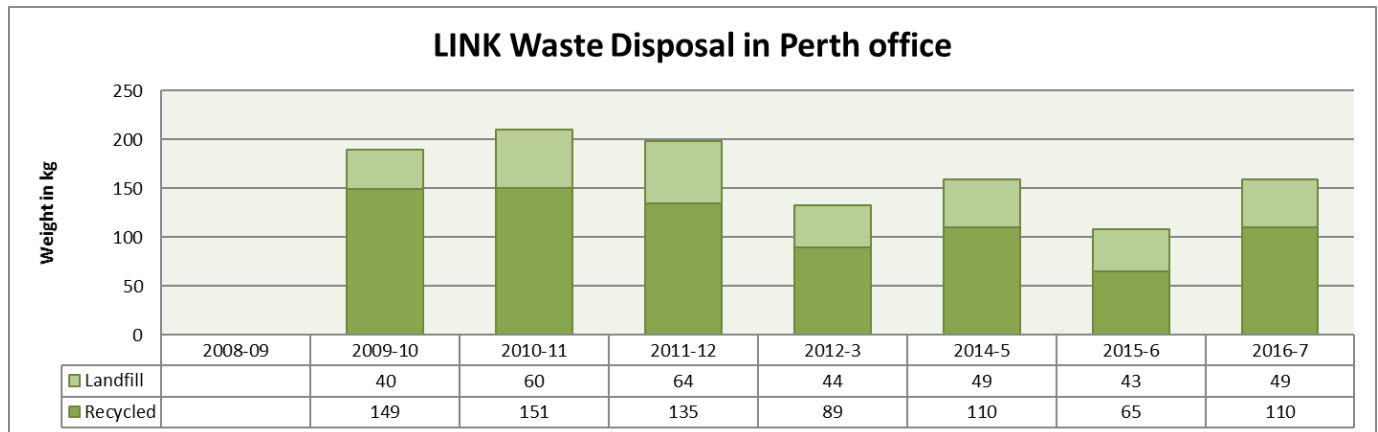


LINK has a policy of encouraging staff to avoid carbon emitting simple business travel by recompensing such journeys on bicycle or by foot at car mileage rates. For those who have longer commutes to work, rail travel remains the most popular and whilst this accounts for nearly 90% of travel, over half of the LINK staff undertake their daily commute either on foot or bicycle.



Total landfill waste generated in our Perth office rose slightly on the previous year, but included waste which is generated from the use of our meeting room which is regularly utilised by member bodies and local charities. Recycling waste showed an increase also and this can, in part, be attributed to the clear out of old/obsolete materials in this year in the Perth office.

We also have a composting facility and wormery which allows us to recycle all our organic matter into reusable compost which is then utilised by our neighbours, Turning Point Scotland (a charity providing person centred support to adults with a range of complex needs) on their gardening project.



Improving our carbon management in 2017-8

For the next financial year, LINK will:

- Continue to promote LINK staff to the Cycle to work scheme, providing tax free bikes for work through the Government's Green Transport Initiative.
- Review energy provision for heating in Perth at next contract break (November 2017) to establish if renewable energy is available/feasible for heating.

Detailed carbon accounts breakdown

Scottish Environment LINK - Carbon Accounting										
2016-7 Carbon Emissions - Detailed Summary										
Category	Unit of measure	Office / Project						TOTAL - incl formula to change to KM	Conv factor	Total kg CO2
		Perth *	Edinburgh	Marine	Flourishing	LINK Meetings				
Energy	Gas	kWh	26,963	3,694	n/a	n/a	n/a	30,657	0.1836	5,629
	Electricity	kWh	3,483	699	n/a	n/a	n/a	4,182	0.5246	367
Energy	TOTAL	kWh	30,446	4,393	n/a	n/a	n/a	34,840		5,996
Business travel	Local Bus	km	10	0	87	100	188	620	0.1488	92
	Coach	km	0	0	22	0	0	35	0.0306	1
	Rail	km	9,058	632	4100	606	9554	38543	0.0565	2,178
	Tram	km	0	0	0	0	140	225	0.0715	16
	Ferry	km	0	0	112	0	0	180	0.1152	21
	Air	km	0	0	218	0	998	1957	0.09684	190
	Taxi	km	90	22	3	0	0	185	0.2121	39
	Car (petrol)	km	252	0	272	0	1217	2802	0.1711	479
	Car (diesel)	km	0	0	0	0	0	0	0.145	0
	Bicycle	km	15	0	237	0	59	501	0	0
Foot	km	0	0	0	0	21	34	0	0	
Business travel	TOTAL	km	9,425	654	5051	706	12097	27933	0	3,016
Commuting	Local Bus	km	0	374	0	0	n/a	602	0.1488	90
	Coach	km	0	0	0	0	n/a	0	0.0306	0
	Rail	km	0	0	17900	0	n/a	28807	0.0565	1,628
	Tram	km	0	0	0	0	n/a	0	0.0715	0
	Taxi	km	0	0	0	0	n/a	0	0.2121	0
	Black cab	km	0	0	0	0	n/a	0	0.172	0
	Car (petrol)	km	704	0	0	0	n/a	1133	0.1711	194
	Car (diesel)	km	0	0	0	0	n/a	0	0.145	0
	Bicycle	km	528	0	630	540	n/a	1864	0	0
Foot	km	704	770	0	0	n/a	2372	0	0	
Commuting	TOTAL	km	1,936	1,144	18,530	540	0	30542		1,911
Recycled waste	Paper	kg	110	n/a	n/a	n/a	n/a	110		
	All others	kg	0	n/a	n/a	n/a	n/a	0		
	TOTAL	kg	110	n/a	n/a	n/a	n/a	110		
Landfill waste	TOTAL	kg	49	n/a	n/a	n/a	n/a	49		
TOTAL										10,923