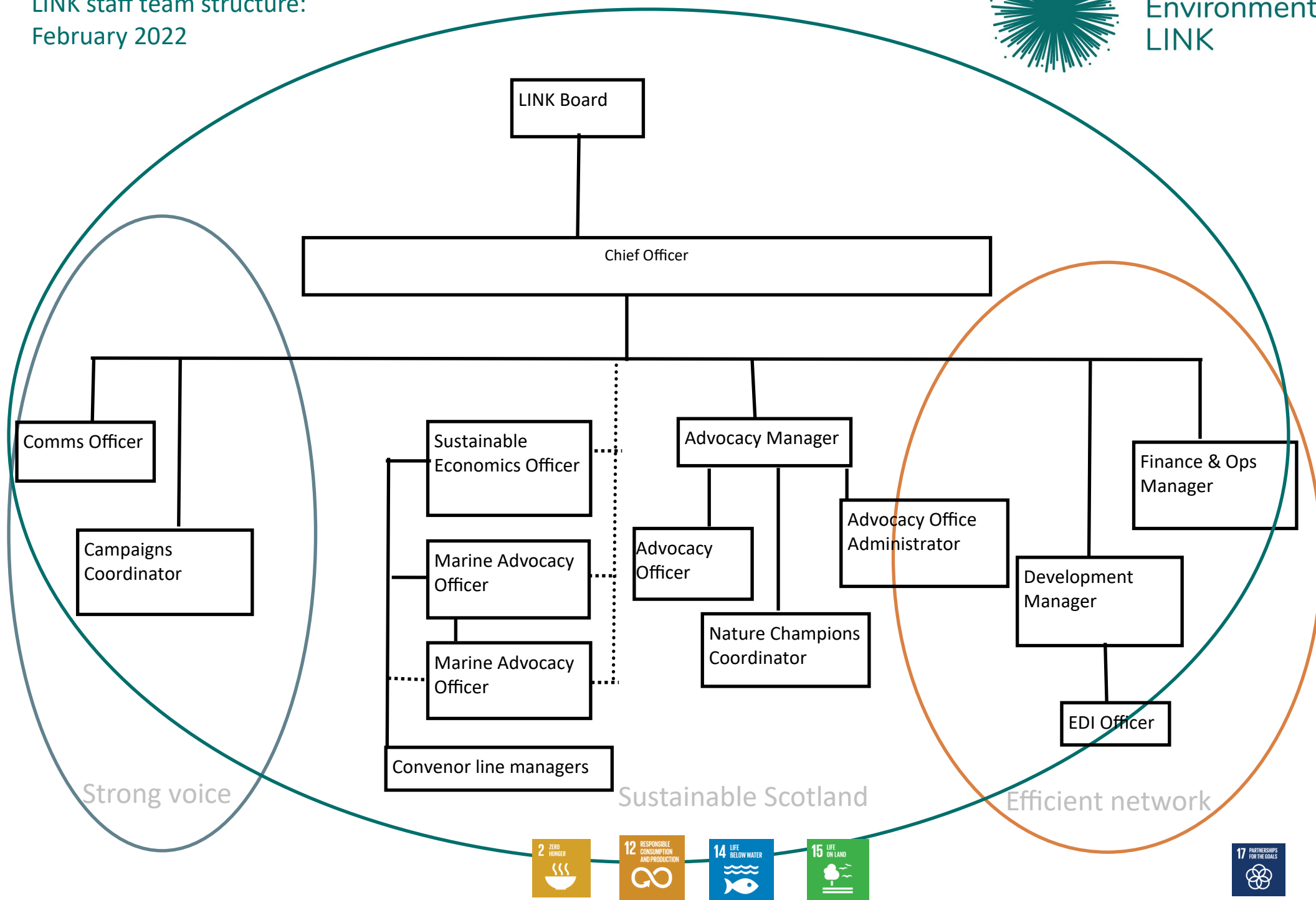


LINK staff team structure:  
February 2022



Scottish  
Environment  
LINK



## 2022 LINK priorities: from Strategic Planning October 2021

<b>Restoration and protection: Nature at scale</b>	<p>Nature Recovery Plan and Ocean recovery plan, MPAs, marine planning, aquaculture management and fundraising; deer, agriculture, INNS.</p> <p>Network completion at sea (MPA implementation) and on land</p> <p>Nature targets: 30x30 &amp; focus on 10% highly protected</p> <p>New NP: influencing govt thinking on what, where and how they operate.</p> <p>SBS: sector involvement in development and delivery</p> <p>Nature networks: working with RLUPs. Plus Member projects eg Affric, Riverwoods, grassland restoration, Scotland's rainforest</p> <p>Just Transition Plans: delivering for nature &amp; circular economy</p> <p>Biodiversity CoP: Edinburgh Declaration &amp; raising awareness of nature CoP and impact / opps for food and farming</p> <p>Good Food Nation bill: food and agriculture links and reaching across silos</p> <p>Species recovery: eg Species on the edge</p> <p>Guidance on land management – farms and species</p>
<b>Use of land and sea:</b>	<p>Narrative of transition to agroecology into public realm: link across silos to biodiversity</p> <p>Fisheries management: future of:</p> <p>Deer: implementing independent group recommendations</p> <p>Land Use Strategy: including action plan so it delivers on nature and climate plus RLUP briefs they are given plus be included</p> <p>Land reform: guarding public interest in land use. Wild land: its role, and use</p> <p>Native woodland planting in targets: member project eg T4L</p> <p>NPF4: cross LINK: looking for support on coordination on key issues</p> <p>Woodland: UK FS review</p> <p>Paths – Ramblers historic path project</p>
<b>Funding:</b>	<p>Doing better with agric support</p> <p>Circular economy: Bill based on policies for footprint reduction</p> <p>10 year economic strategy: getting env expertise into policy making. GR group – provide wider context on green recovery</p> <p>Funding for nature and providing sector with voice on direction of travel; demonstrating leverage potential of public funding with philanthropic and green financing eg Billion £ challenge;</p> <p>Land Tax – JMT initiative</p> <p>Forest Grant scheme review</p>
<b>Logistics: how we work / working better</b>	<p>Building relationships: with eg New MSPs; Circ economy coalition; Food organisations; Just Transition Commission; Weall</p> <p>Support on legislation development / needs in other LINK groups</p> <p>Good legislation prep on Nat Env Bill</p> <p>Coordination across LINK groups on key issues – Economic Transformation Strategy, NPF4; 30x30; nature networks local and national;</p> <p>Using 5 tests to demonstrate potential impact of legislation / policies</p> <p>Cross UK members and sister LINKs</p> <p>Member strategies to 2030 (RSPB and Plan eg)</p> <p>Managing the long tail of Covid: Helping each other through LINK: opportunities; getting voices heard; coordinating powerful asks; sharing info and resources</p>
<b>Public awareness:</b>	<p>current – and new campaigns: support for farming / land use campaign</p> <p>Consumers and consumer action: eg peat ban; Deposit return schemes; single use plastics</p> <p>Access to nature / wild land / railways</p> <p>Nature engagement through species; nature and heritage benefits to wellbeing</p> <p>Working with other sectors – eg art – getting others to take our messages out</p> <p>EDI – across membership and support to improve on our baseline in member survey</p> <p>Visitor management and outdoor visits in future – maintaining current levels of support</p>
<b>Well being:</b>	<p>Affordability of healthy food</p> <p>Just transition: fairer futures</p> <p>Healthy env and right to one: pollution; access</p>