

John Muir Trust



Equity, Diversity and Inclusion Team

April 25 – Nature for All



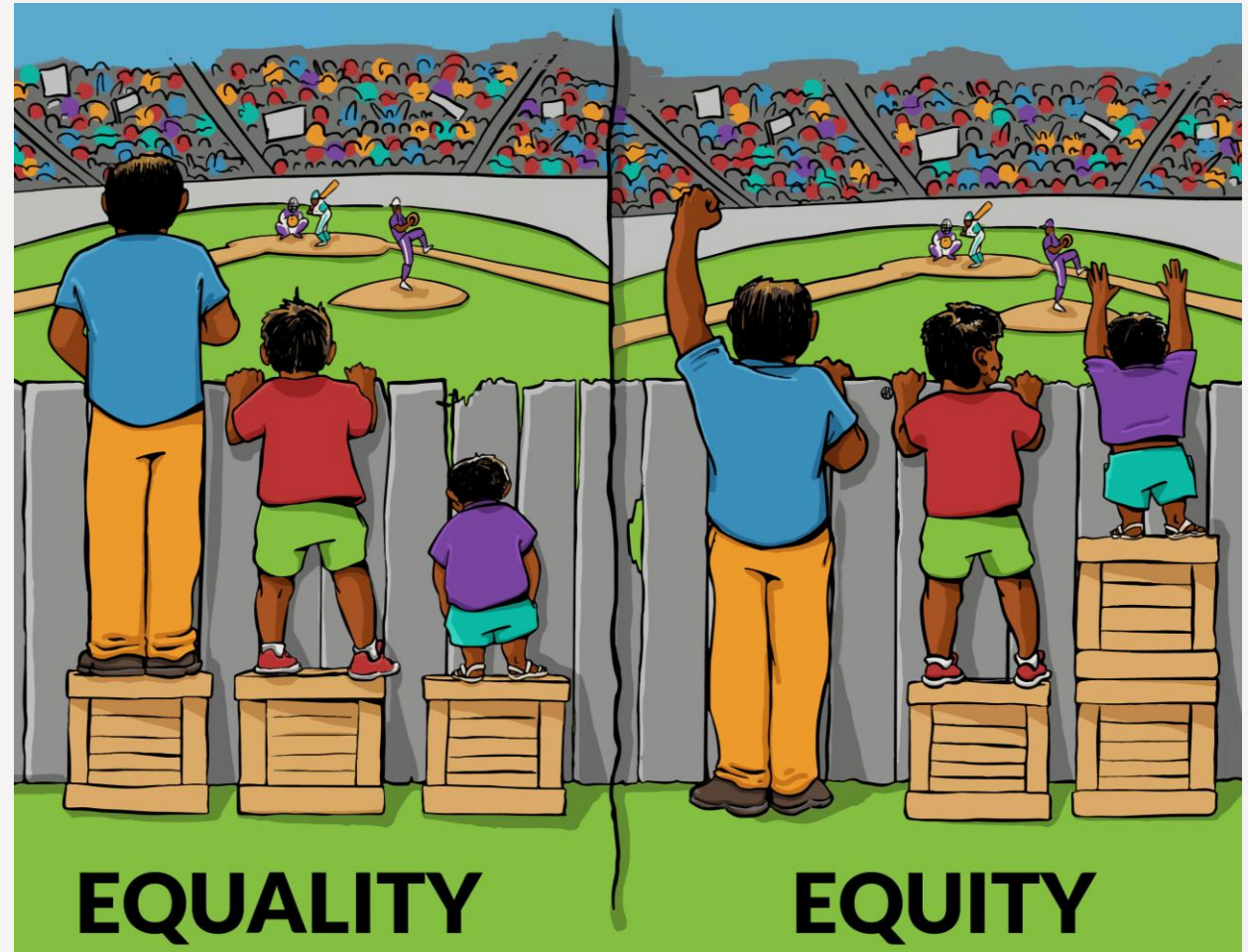
Content

- **EDI for us**
- **The Trust's ambition**
- **Purpose of the EDI team**
- **Meet the team**
- **Our Approach**



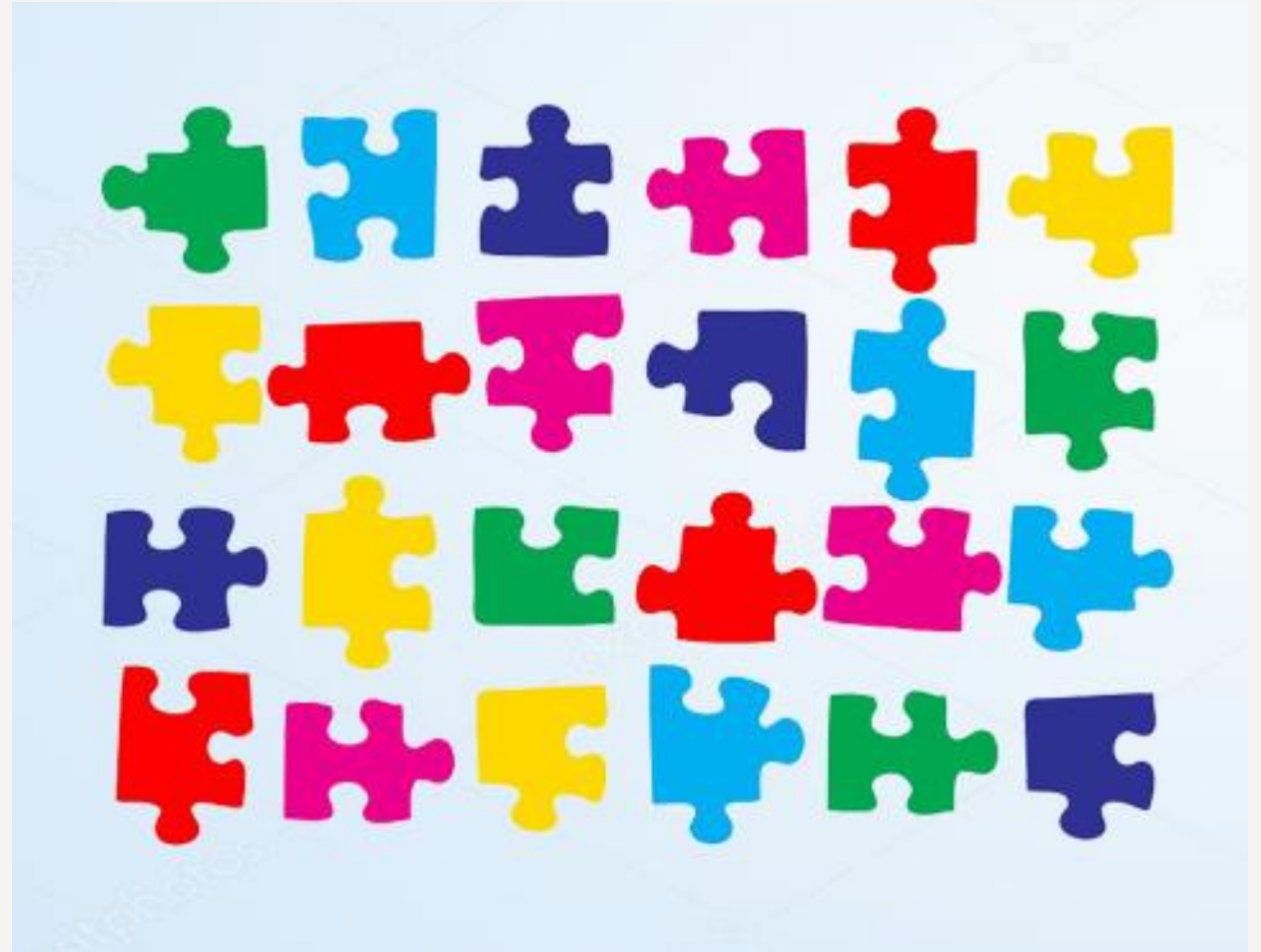
Equity

- Resources to enable access to the same opportunities
- Treating everyone equally does not necessarily lead to equality



Diversity

- **Recognising that everyone is different in a variety of visible and non-visible ways**
- **Differences are recognised, respected and valued.**



Inclusion

- **Creating an environment that is welcoming, where people feel valued and a sense of belonging**
- **Recognising and celebrating difference in our structures, practices and attitudes**



The Trust's ambition



Represent all levels of society through our members, board, staff and volunteers



Be an inclusive, fair, and diverse place to work



Ensure our staff and volunteers feel valued and respected

Purpose of the EDI team



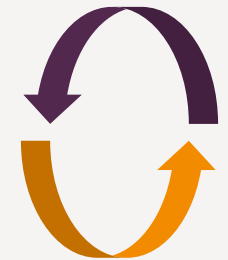
We are a group that helps the organisation achieve its EDI ambitions



Recognise the Trust's journey to being an equitable, diverse and inclusive organisation

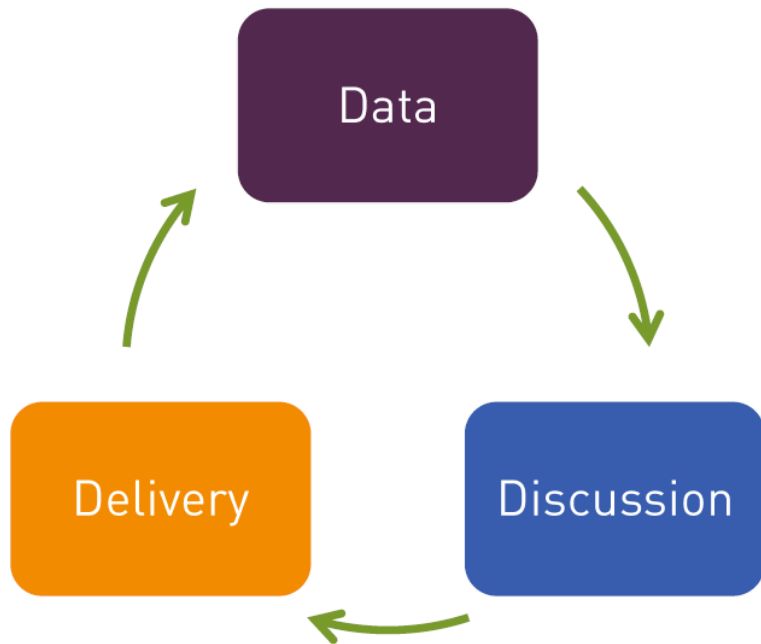


Recognise and champion the importance of Equity Diversity and Inclusion (EDI) to the Trust

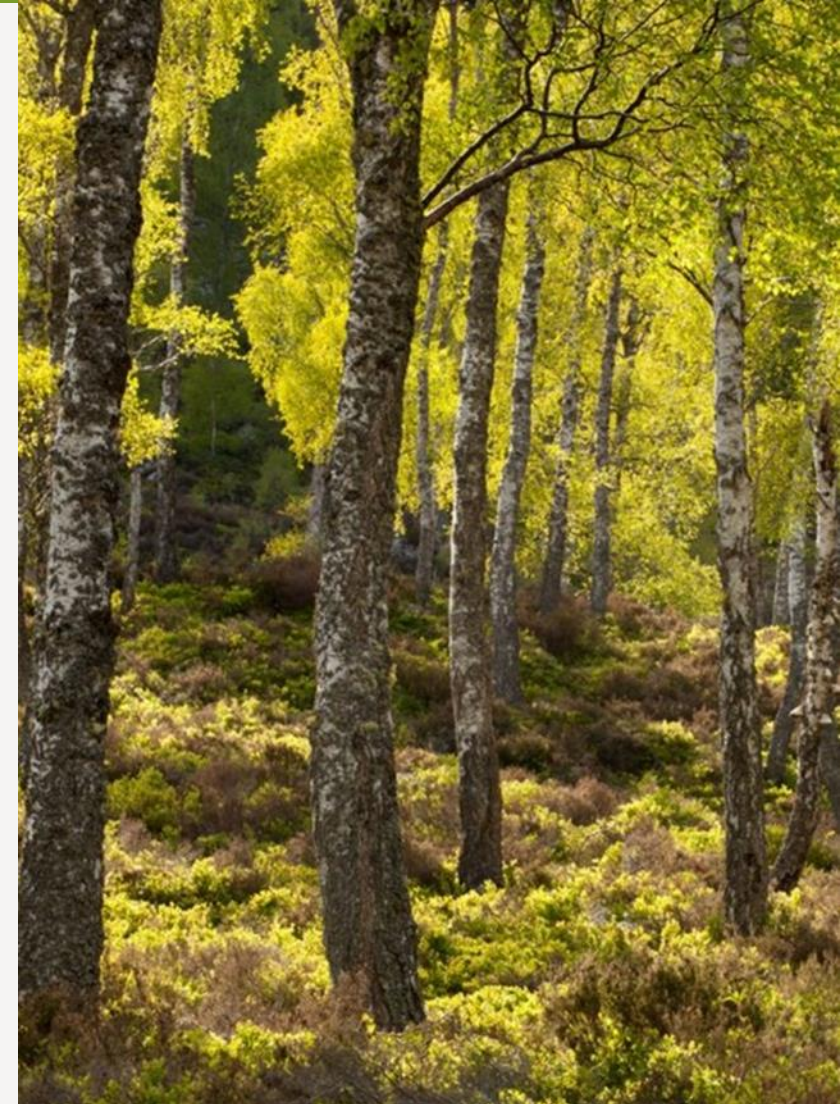


Support the Trust's ambitions as detailed in its EDI Policy 'Wild Places For All'

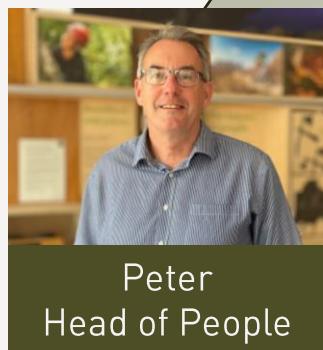
Our Approach



- **Collecting data via surveys and feedback**
- **Creating a supportive environment through, training and working with partners (LINK)**
- **Making ambitions a reality through collaboration**



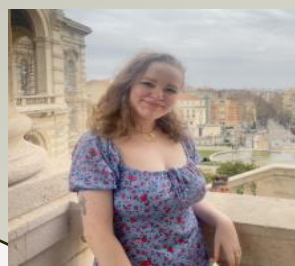
Meet the team



Cathleen
RDM Central



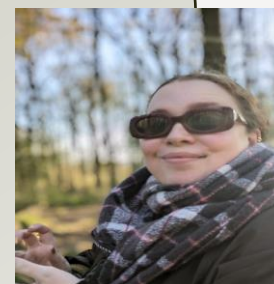
Thomas
Head of
Campaigns



George
Income Generation
Assistant



Gareth
RDM South



Imogen
Secretariat
Assistant

